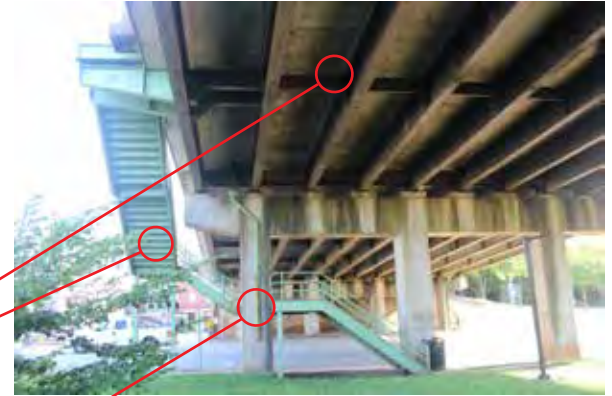
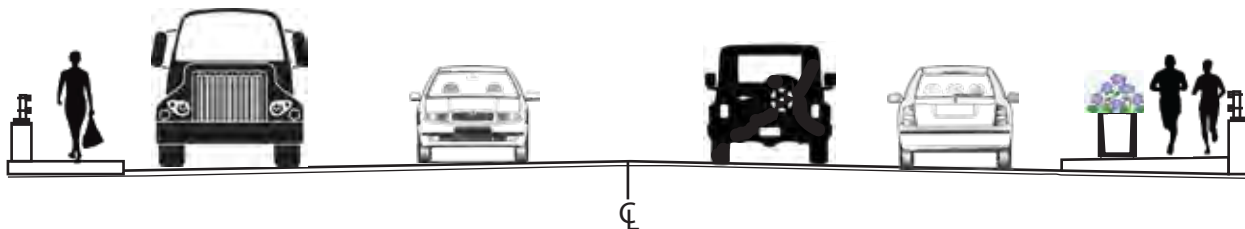


# Church Street (US 29) Bridge Rehabilitation



- Replace Lighting
- Raise Bridge Handrail to Meet Safety Standards & Improve Aesthetics
- Repair & Overlay Bridge Deck
- Paint Underside of Bridge
- Replace Pedestrian Stairs
- Repair Drainage System
- Install 5-foot Sidewalk
- Remove Median Barrier
- Add 9-Foot Sidewalk with Planter Boxes



The South Carolina Department of Transportation (SCDOT) and the City of Greenville are undertaking the rehabilitation of the Church Street Bridge. The proposed project will include steel girder painting, joint sealing, spall repair, and bridge deck rehabilitation with hydrodemolition and new concrete overlay to improve the poor condition of the deck concrete.

During construction, traffic flow will be maintained across the bridge. Travelers who regularly use the bridge should anticipate delays or choose an alternative route.

To avoid injury to the public, and to facilitate construction, it is anticipated that the sidewalk on the Church Street Bridge will be closed for the duration of the rehabilitation. Pedestrians who regularly use the bridge can use Falls Street and East Camperdown Way while the bridge is closed.

In addition, parking areas beneath the bridge will be closed as needed during construction for safety and to prevent potential damage to vehicles. Prior to closure, businesses will be notified and barricades and signage will be placed in the necessary parking areas.

## Project History

Constructed in 1959, the Church Street Bridge carries US 29 over McBee Avenue and East Broad Street in downtown Greenville. The structure was built during a period of growth in the city, when automobile travel became commonplace and the goal of roadway construction was to move travelers as quickly and efficiently as possible. The large span of the four-lane bridge was designed to allow cars to bypass the city's grid and move quickly to the other side of town.

In 2021, Church Street from Augusta Street to North Spring Street had an average daily traffic volume (ADT) of 26,300 vehicles. It is predicted that by 2039, the ADT could reach more than 38,000. As the bridge has aged, and traffic volumes have increased, the condition of the structure has deteriorated to the point that a large-scale rehabilitation is necessary. Based on the Federal Highway Administration's InfoBridge Database, the bridge no longer meets current design and safety standards and the structure is currently considered only to be in fair condition.

The bridge has been slated for rehabilitation since 2017; however, the project has been on hold while funding was identified and rehabilitation alternatives were explored. The City of Greenville and the SCDOT considered several options to improve the bridge, including the complete removal of the structure.

In 2021, bridge maintenance funding became available, allowing the project to move forward. It was determined that the best course of action would be to rehabilitate the bridge and reconfigure the deck to allow for safe pedestrian access.

### FOR MORE INFORMATION



### Project Website

[www.ChurchStBridgeRehab.com](http://www.ChurchStBridgeRehab.com)

If you need additional information or cannot access the website, please contact the Project Manager:

**Erica Hailey, Assistant Program Manager**  
SC Department of Transportation  
HaileyEY@scdot.org  
803-737-4848

During construction the bridge will remain open to vehicular traffic; however, the bridge will be closed to pedestrians. Pedestrians can navigate around the closed bridge by using East Washington Street, Falls Street, and East Camperdown Way.